



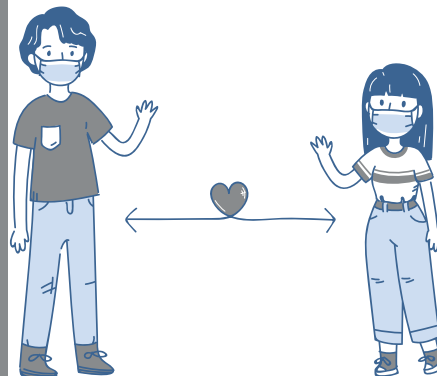
14TH ANNUAL SONOMA COUNTY TRANSITION FAIR

We are going back to in-person!

**Supporting students with
disabilities and their families in the
transition to adult life.**

**Learn information about &
meet representatives from:**

- Employment Services**
- Independent & Supported
Living Services**
- Community Day Programs**
- Wraparound or Support
Services**
- Training & Education**
- Post-Secondary Education**



**MARCH 2, 2022
3p - 6p**

**FINLEY
COMMUNITY
CENTER**

**2060 W. COLLEGE AVE
SANTA ROSA, CA**

COVID SAFETY

- A face mask is required throughout the entire event.
- Please do not attend if you are experiencing any symptoms related to COVID-19.
- Please allow time for sign-in and to answer Covid pre-screening Questions upon check-in.

[Click Here to Pre-Register](#)

INTERPRETERS AVAILABLE

Spanish interpretation will be available.

Please contact Ashley Duke at 707-576-2243 by 2/25 to request ASL interpretation if needed.